

FORESTERI

2010/2010T

TIMBER TRUCK LOADER



PATU ■■■



Lifting torque is distinctively constant throughout the whole working area. Well matching boom geometry and working speed make the loading work pleasant and safe in all positions. Illustrated a Foresteri 2010T with double telescopic extension and crane controls on the left side of the main boom.



The new ergonomically designed loader controls guarantee smooth and accurate operation of the loader. Seat height adjustment is easily achieved by use of a lever.



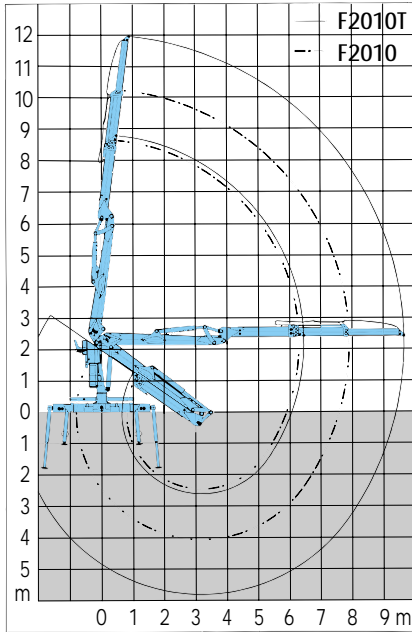
Foresteri 2010/2010T is a modern timber crane in the popular ten tonne-meter lift capacity class. With Foresteri 2010T you can handle full grapple loads at a radius of almost 10 meters.

Foresteri loaders can be factory fitted with several mounting alternatives and a wide range of accessories. Illustrated the popular Foresteri cabin, featuring e.g. sunroof, side windows that can be opened, fresh air fan and a radio.

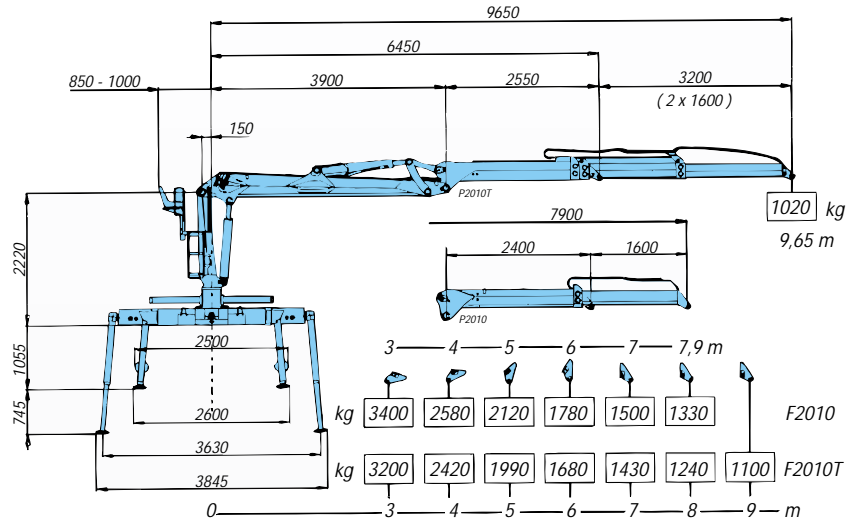


FORESTERI 2010/2010T

OUTREACH DIAGRAM



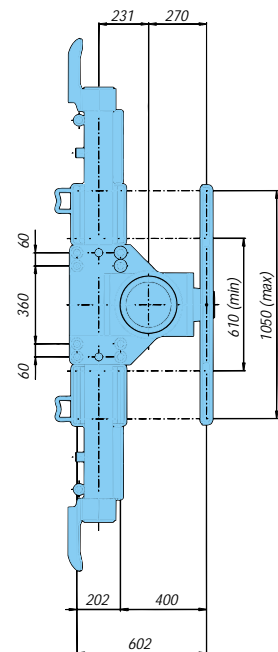
ALLOWED LOADS



TECHNICAL SPECIFICATIONS			2010	2010T
FORESTERI 2010/2010T			2010	2010T
Lifting capacity	gross	kNm (tm) lbf	133 (13,5) 98000	133 (13,5) 98000
	net	kNm (tm) lbf	105 (10,7) 77400	99 (10,1) 73000
Outreach		m ft	7,9 25'11"	9,65 31'8"
Stroke of boom extension		m ft	1,60 5'3"	2 x 1,60 2 x 5'3"
Slewing torque		kNm lbf	27 19900	
Slewing angle		°	415	
Lifting capacity at 4 m radius 13 ft radius		kg lbs	2580 5700	2420 5330
Weight without oil, grapple and rotator		kg lbs	2010 4430	2120 4670
Pump recommendation		MPa (bar)	24 (240)	
- working pressure		psi	3410	
- flow	single pump	l/min gpm	70-140 15-30	
- power input	double pump	l/min gpm	2 x 70-120 2 x 15-26	
	single pump	kW	30-56	
	double pump	kW	50-96	

All details are subject to change without notice. Listed values without obligation.

BASE DRAWING



MANUFACTURED BY:

KESLA OYJ

P.O. BOX 282
FIN-80101 JOENSUU, FINLAND
tel. +358 (13) 682 841
fax +358 (13) 682 8300

DISTRIBUTED BY:

SALES AND SERVICE: